



**Rahman Knit Garments**  
**L I M I T E D**

*Corporate Profile of*  
**Rahman Knit Garments Ltd.**

Hariharpara, Panchabati , Fatullah (west side of police line) Narayanganj, Bangladesh.

Tel: 88-02-7670037, 7671205, 7672419, 7671997

Fax: 88-02-7634309 Website: [www.rkgltd.com/www.rahmanknit.com](http://www.rkgltd.com/www.rahmanknit.com)

E-mail: [info@rkgltd.com](mailto:info@rkgltd.com)

**A 100% Export Oriented Composite Knit Project With Complete Range of Knitting, Dyeing and Yarn  
Dyeing, Sewing & Finishing of All Sorts of Knit Garments.**

**Board of Directors:**

**Chairman:** Md. Mizanur Rahman (88-01713043732)  
**Managing Director:** Md. Atiqur Rahman (88-01711560464)  
**Directors:** Md. Shafiqur Rahman (88-01720170912)  
Md. Mostafizur Rahman (88-01713002400)  
Md. Mukaddasur Rahman Asif (88-01731727369)

**Contact Persons:**

1. Mr. Sanjoy Kumar Saha –Manager Commercial (88-01711032785)
2. Md. Nahidul Islam- DGM, Fabric Dyeing (88-01714075413)

**Year of Establishment: 1991**

**Number of Workers: 1389 (Approx.)**

**Production Capacity:**

**T-Shirt, Polo shirt, Sweat shirt & Other Knitwear: Approx. 50,000-55,000 Pcs per Day.**

**T Shirts- 38,000-42,000 Pcs per day (Approx.)**

**Polo: 12,000-13,000 Pcs per day (Approx.)**

**Lead Time: - 45-65 Days (After LC receiving)**

## Our valuable Customers List

<u>Customer list</u>	<u>Country</u>
SOLO INVEST	FRANCE
AVOMARKS	FRANCE
RTP	U.S.A
MJUNIK	GERMANY
JOYTHAI	FRANCE
KAPPA	FRANCE, ITALY, GERMANY
PAYPER	ITALY

### Factory Space

**Cutting, Sewing & Finishing (5 Floors): 15000 Sq. Ft. Each floor**

**Fabric & Yarn Dyeing Section: 35,000 Sq. Ft.**

**Laboratory and Office (Dyeing section): 5000 Sq. Ft.**

**Warehouse 24,000 Sq. Ft. (In the same premises)**

**Corporate Head office: 10,000 Sq. Ft.**

**A total composite unit in the same compound surrounded by secured boundary wall having 3000 sqft open space in the middle of the compound with green plantation, gardening and car parking facility.**

# Rahman Knit Garments Ltd.

## A Composite Knit project

### List of machinery - Sewing Section

SL.	Name of Machinery	Brand	Qty	Origin
1	4 Thread Over lock	Yamato/Pegasus/Juki,	152 Sets	Japan.
2	5 Thread Flat Lock (Cylinder Bed)	Yamato/Pegasus/Juki,	76 Sets	Japan.
3	5 Thread Flat Lock (Flat Bed)	Yamato/Pegasus/Juki,	27 Sets	Japan
4	S/Needle Plain Machine	Juki/Brother,	141 Sets	Japan.
5	Button Hole Stitching	Juki/ Brothers	08 Sets	Japan
6	Button Stitch	Juki/ Brothers	08 Sets	Japan
7	Bar Tak	Brother	01 Sets	Japan
8	Feed of The Arms	Juki,	06 Sets	Japan.
9	Small Cylinder Bed	Juki/Pegasus	04 Set	Taiwan
10	Smoke m/c Up to 60-Needle	Kansai	01 Set	Japan
11	Rib cutting M/C	Dino	01 Set	Taiwan
12	Cloth Cutting Machine 8"/10"/13"	KM	08 Sets	Japan.
13	Fusing Machine	Hasima	1 Pcs	Japan
14	Thread Sucker Machine	---	05 Set	Taiwan
15	Steam Iron	---	30 set	Taiwan
<b>Total =</b>			<b>469 Set</b>	

# Rahman Knit Garments Ltd.

A Composite Knit project

## Knitting Division

A Complete Knitting Division with Machinery of Latest Technology

### KNITTING MACHINE PROFILE

**BRAND NEW HIGH QUALITY 4 TRACK SINGLE JERSEY & RIB-INTERLOCK  
CIRCULAR KNITTING MACHINE, ORIGIN TAIWAN**

#### ❖ 4 TRACK SINGLE JERSEY

SL.	DIA	GAUGE	ATTACH	BRAND	ORIGIN	SET
1	15''	24/28		FUKAHAMA	TAIWAN	1
2	16''	24/28		FUKAHAMA	TAIWAN	2
3	17''	24/28		FUKAHAMA	TAIWAN	1
4	18''	24/28		PAINLUNG	TAIWAN	1
5	19''	24/28		PAINLUNG	TAIWAN	1
6	19''	24		FUKAHAMA	TAIWAN	1
7	20''	24/28		PAINLUNG	TAIWAN	3
8	21''	24/28		PAINLUNG	TAIWAN	2
9	21''	24		FUKAHAMA	TAIWAN	1
10	22''	24		FUKAHAMA	TAIWAN	1
11	22''	24/28	LYCRA	PAINLUNG	TAIWAN	1
12	23''	24		FUKAHAMA	TAIWAN	1
13	24''	24		FUKAHAMA	TAIWAN	1

**RIB /INTERLOCK MACHINE WITH LYCRA ATTACHMENT**

SL.	DIA	GAUGE	ATTACH	BRAND	ORIGIN	SET
1	32''	18/24	LYCRA	PAINLUNG	TAIWAN	1
2	34''	18/24	LYCRA	PAINLUNG	TAIWAN	1
3	36''	18/24	LYCRA	PAINLUNG	TAIWAN	1
4	38''	18/24	LYCRA	PAINLUNG	TAIWAN	2
5	40''	18/24	LYCRA	PAINLUNG	TAIWAN	1
6	42''	18/24	LYCRA	PAINLUNG	TAIWAN	1
7	44''	18/24	LYCRA	FUKAHAMA	TAIWAN	1

**SINGLE JERSY MACHINE WITH LYCRA ATTACHMENT**

SL.	DIA	GAUGE	ATTACH	BRAND	ORIGIN	SET
1	34''	24/28	LYCRA	PAINLUNG	TAIWAN	1
2	36''	24/28	LYCRA	PAINLUNG	TAIWAN	1
3	38''	24/28	LYCRA	PAINLUNG	TAIWAN	1
4	40''	24/28	LYCRA	PAINLUNG	TAIWAN	1

**FLAT KNIT MACHINE (COLLAR-CUFF ) DEPT.**

SL.	DIA	GAUGE	ATTACH	BRAND	ORIGIN	SET
1	60''	14	NORMAL/LYCRA	JYLEH	TAIWAN	7-1 Head
2	60''	14	NORMAL/LYCRA	KAUO HENG	TAIWAN	4-2 Head
3	80''	14	NORMAL/LYCRA	KAUO HENG	TAIWAN	4-2 Head

**Contact Person:**

**Knitting Asst. Manager (MKT. & PROD. Planning)**

**Mob:- 018177744495**

# **Rahman Knit Garments Ltd.**

**A Composite Knit project**

## **Fabric Dyeing & Finishing Section**

A Complete Dyeing & Finishing Division with Machinery of Latest Technology.

**Capacity:** About 11 Tons (11000 KG) Per Day

Year of Establishment: 2004

### **Details of Machinery**

<b>SL.</b>	<b>NAME OF M/C</b>	<b>ORIGIN</b>	<b>QTY</b>	<b>CAPACITY PER M/C</b>
<b>1</b>	LAPRO (HTHP)	SWITZERLAND	01	<b>750 KG</b>
<b>2</b>	AK Dyeing Machine	TAIWAN	01	<b>500 KG</b>
<b>3</b>	AK Dyeing Machine	TAIWAN	02	<b>320 KG</b>
<b>4</b>	AK Dyeing Machine	TAIWAN	01	<b>800 KG</b>
<b>5</b>	SCLAVOS ATHENA 3A (HTHP)	GREECE	01	<b>750 KG</b>
<b>6</b>	SCLAVOS ATHENA 4A (HTHP)	GREECE	01	<b>500 KG</b>
<b>7</b>	SCLAVOS ATHENA 4A (HTHP)	GREECE	01	<b>250 KG</b>
<b>8</b>	SCLAVOS ATHENA (HTHP)	GREECE	01	<b>750 KG</b>
<b>9</b>	AK Dyeing Machine (HTHP)	TAIWAN	01	<b>100 KG</b>
<b>10</b>	AK Dyeing Machine (HTHP)	TAIWAN	01	<b>20 KG</b>
<b>11</b>	AK Dyeing Machine (HTHP)	TAIWAN	01	<b>30 KG</b>
<b>12</b>	AK Dyeing Machine (HIGH TEMP)	TAIWAN	01	<b>15 KG</b>
<b>13</b>	LAB DIP M/C (MATHIS)	SWITZERLAND	01	<b>30 POT</b>
<b>14</b>	SANTEX SQUEEZER	SWITZERLAND	01	<b>8000 KG</b>
<b>15</b>	SANTEX Dryer	SWITZERLAND	01	<b>8000 KG</b>
<b>16</b>	CARINO Squeezer	ITALY	01	<b>10000 KG</b>
<b>17</b>	ENTEMA Dryer	ITALY	01	<b>10000 KG</b>

<b>18</b>	TUBE TEX Compactor	U.S.A	02	<b>6000 KG</b>
<b>19</b>	DONGNUM Air Turning	KOREA	01	<b>10000 KG</b>
<b>20</b>	BIB COCHRAN Boiler	U.K	01	<b>6500 KG</b>
<b>21</b>	SCREW Type compressor	FRANCE	02	<b>Sufficient</b>
<b>22</b>	WATER TREATMENT PLANT	INDIA	01	<b>60M<sup>3</sup>/HR</b>
<b>23</b>	EFFLUENT TREATMENT PLANT (ETP)	---	01	<b>50M<sup>3</sup>/HR</b>
<b>24</b>	CLAYTON EXHAUST GAS BOILER	U.S.A	01	<b>750 KG</b>

### **OPEN WIDTH SECTION**

<b>SL.</b>	<b>NAME OF M/C</b>	<b>ORIGIN</b>	<b>QTY</b>	<b>CAPACITY PER M/C</b>
<b>1</b>	BRUCKNER Stenter M/C	GERMANY	01	<b>8000 KG</b>
<b>2</b>	Lafer Compacting M/C	GERMANY	01	<b>7000 KG</b>
<b>3</b>	BIANCO Slitting M/C	ITALY	01	<b>9000 KG</b>
<b>4</b>	BAG Sewing M/C	ITALY	01	<b>5000 KG</b>
<b>5</b>	Throw Oil Type Boiler M/C	GERMANY	01	<b>20 Lack KCH</b>



**LABORATORY MACHINERY (Knit dyeing Dept.)**

SL.	BRAND/NAME of M/C	ORIGIN	QTY	CAPACITY PER M/C
1	DATA COLOR- SPECTROMETER	U.S.A	01	
2	WASCATOR- Industrial Washing M/C	U.K	01	05 KG
3	BOSCH- Domestic Washing M/C	TURKEY	01	7 KG
4	WHIRLPOOL Tumble dryer	ITALY	01	5 KG
5	INDESIT- Tumble dryer	ITALY	01	
6	ORBITOR Pilling Tester	U.K	01	
7	GYROWASH-(Color Fastness to Washing)	U.K	01	
8	CROCKMETERS-(Color Fastness to Rubbing)	U.K	01	
9	INCUBATOR-(Perspiration test, Phenolic yellowing Test, Color fastness to water Test )	U.K	01	
10	MATHIS -LAB Dyeing M/C	SWITZERLAND	01	12 POT
11	COPOWER -LAB Sample Dyeing M/C-	TAIWAN	01	24 POT
12	HANNA – PH Meter	ROMANIA	01	
13	JAMES H. HEAL ORBITOR–Pilling & Snagging tester	U.K	01	
14	VERVIVIDE –Pilling assessment viewer	U.K	01	
15	VERVIVIDE –Light box	U.K	01	

**LABORATORY MACHINERY (Yarn dyeing Dept.)**

SL.	BRAND/NAME of M/C	ORIGIN	QTY	CAPACITY PER M/C
1	COPOWER- Yarn dyeing M/C	TAIWAN	1	24 POT
2	COPOWER- Yarn dyeing M/C	TAIWAN	1	12 POT
3	LAB TECH- Dryer	KOREA	01	
4	VERIVIDE- Light box	U.K	01	
5	CENTURY FAITH – Yarn dyeing lab winding M/C	TAIWAN	01	

# **Rahman Knit Garments Ltd.**

**A Composite Knit Project**

## **Yarn Dyeing & Finishing Division**

A Complete Yarn Dyeing & Finishing Division with Machinery of Latest Technology.

**Capacity: 06 Tons (6000 KG) per day**

**Year of Establishment: 2008**

### **Details of Machinery**

<b>SL.</b>	<b>NAME OF M/C</b>	<b>ORIGIN</b>	<b>QTY</b>	<b>CAPACITY PER M/C</b>
<b>1</b>	BRAND NEW 5 MT Crane	TAIWAN	02	5 MT

### **Rapid High Temp. & Pressure Yarn Dyeing Machine**

<b>SL.</b>	<b>NAME OF M/C</b>	<b>ORIGIN</b>	<b>QTY</b>	<b>CAPACITY PER M/C</b>
<b>2</b>	TGCH-5	TAIWAN	02	05 KG
<b>3</b>	TGCH-30	TAIWAN	01	30 KG
<b>4</b>	TGCH-50	TAIWAN	01	50 KG
<b>5</b>	TGCH-100	TAIWAN	02	100 KG
<b>6</b>	TGCH-160	TAIWAN	02	160 KG
<b>7</b>	TGCH-300	TAIWAN	02	300 KG
<b>8</b>	TGCH-750	TAIWAN	01	750 KG
<b>9</b>	REWINDING M/C 60 Spindles	TAIWAN	08	Sufficient
<b>10</b>	HYDRO EXTRACTOR 7.5 HP Inverter	TAIWAN	01	54 Cones
<b>11</b>	SSM Winding M/C (Soft)	SWITZERLAND	04	240 Spindles each
<b>12</b>	BIB Cochran Seam Boiler	U.K	01	5000 KGS/HR
<b>13</b>	STALAM RADIO Frequency Dryer	ITALY	01	3300 KG
<b>14</b>	TN-35 Cross Cone Winder	TAIWAN	01	004 SPINDLES

## **Print & Embroidery Strategic Collaboration**

For any Print& Embroidery we have Strategic Collaboration with few companies where our own QC team do strong follow up. These are our strategic Partners for quality full Print & Embroidery support. Different categories of print & Embroidery we are doing like-

- Flock Print
- Hi-density Print
- Discharge Print
- Pigment Print
- Foil Print
- Glittering Print
- Ambush Print
- Rubber Print
- Sami Rubber Print
- Photo print
- All over print
  
- All types of embroidery



### **POWER SOURCE OF THE PROJECT**

<b><u>Machinery Name</u></b>	<b><u>Country</u></b>	<b><u>Unit</u></b>	<b><u>Capacity</u></b>
CATTERPILLER GAS GENERATOR	USA	01	1030 KW
CATTER PILLER GAS GENERATOR	USA	01	1030 KW
FG WILSON DIESEL GENERATOR	U.K	01	880 KW
LS LEROY SOMER DIESEL GENERATOR	DENMARK	01	560 KW
FG WILSON DIESEL GENERATOR	U.K	01	88 KW
DPDC SUBSTATION POWER PLANT	BD	01	960 KW

# **Rahman Knit Garments Limited**

## **A Brief Profile**

Rahman Knit Garments Ltd is a reputed Composite knit unit in Narayanganj. In 1991, it started its journey as small knit garments. All the members of the Board of Directors are well expert in their respective fields. By dint of honesty, perseverance, hardworking and sincerity, Rahman Knit Garments Ltd. has become a well-flourished and reputed Industry. Quality production, punctuality in shipment and honest adherence to the business ethics are the motto of the company. The company got Prime Customer award of Janata Bank in the year 2002. Its principal Buyers are the reputed & esteemed companies of Europe.

Rahman Knit Garments has the pleasure to announce that it has never got any stock lot since its inception till to date.

The Board of Directors of Rahman Knit Garments believes that the race of business is unlimited. In the year 2004 the company was extended by establishment of a Knit Dyeing Division with most modern machinery having eye to the latest technology with cost of 6 million US dollar. It has capacity of 11000 kgs per day.

In the year 2008 a modern Yarn Dyeing project has been established at the cost of 5 million US dollar. Now Rahman Knit Garments Ltd. has achieved the complete status of a Composite Unit.

Rahman Knit Garments Ltd. always recalls and acknowledges cordially the co-operation received from all its valued buyers, suppliers and all other persons and institutions concerned.

### **Compliance Status:**

The management of Rahman Knit Garments Ltd. always tries to extend a big hand for the welfare of its workers and staffs. The company strictly maintains Child labor restriction, Healthy factory layout, Pure drinking water, Sanitation and Medical facility for the workers and staffs. Latest compliance audit is done by **BSCI and Rahman Knit Garments Ltd. has been passed in that Audit.**

## Company Certifications: -

1. OEK TEX (Class-I)
2. Organic OEKO TEX
3. Organic content Standard (OCS)
4. Global Organic Textile Standard (GOTS)
5. GRS (Global Recycle Standard)
6. Better cotton initiative
7. Amfori BSCI
8. Fair wear Foundation
9. ILO (International Labor Organization)
10. RMG sustainability Council (RSC)



International  
Labour  
Organization



## Service to Humanity (CSR)

### 1. MAHABUBUR RAHMAN MEMORIAL HOSPITAL :-

The company has established a 65 beds modern Hospital- “**Mahbubur Rahman Memorial Hospital**” at Rupasdi, B. Baria, the native village of the owners at their own financing. The company is proud to set up such a people welfare organization. The aim is to provide Medicare to poor people at a very nominal rate. This is running on no profit no loss basis for the poor and needy people of their native village. The total establishment cost is around USD 25,00,000 which is totally donated from Rahman knit Garments Ltd.

### 2. MAHABUBUR RAHMAN MEMORIAL NURSHING INSTITUTION :-

In 2014, **Mahbubur Rahman Memorial Nursing Institution** is being inaugurated. We have felt that women in village they do nothing after completing their education. To empower women we have taken this initiative where women can do a 3 years course on Nursing and they will be automatically recruited to the hospital as a nurse which is also ensuring Future Job for the Students.

### 3. MAHABUBUR RAHMAN MEMORIAL HOSPITAL (DIABETIC & CARDIAC UNIT) CRS Project :-

Having spontaneous response from the threshold humanity and to mitigate the crying need of prevailing health condition the group has taken a new step forward by initiating the development work of Cardiac & Diabetic unit. We are expecting of this new unit at the end of 2023.



PRIVIEW OF UPCOMING NEW CSR PROJECT

## Recognitions:

Year	Name of the Award
2003	Prime Customer Award of Janata Bank
2008	Highest Personal Tax Payer
2009	Standard Chartered & Financial Express CSR Award

- **In 2003-** Rahman Knit Garments Ltd. is the laureate of **Prime Customer Award** from **Janata Bank Ltd.**
- **In 2008-** The Managing Director of the company has been honored as the **Highest Personal Tax Payer** by the Government of the Peoples Republic of Bangladesh and has been awarded by **Chairman of the National Board of Revenue.**
- **In 2009-** The Company has been selected for **Corporate Social Responsibility (CSR) Award** for its subsidy health service to the humanity through establishing a modern hospital named “**Mahbubur Rahman Memorial Hospital**” at the native village of the owners. The CSR award was organized by the Standard Chartered Bank and The Financial Express. **The Award was handed over by Honorable Finance Minister of the Republic Of Bangladesh and Governor of The Bangladesh Bank.**

## BANKING PARTNERS

### Lien Banker- 1

**: JANATA BANK LTD.**

B. B. Road Corporate Branch,  
Narayanganj, Bangladesh.

Tel: 880-2-7640655, 7632913, 7632914, 7633955

Fax: 880-2-7633923

SWIFT: JANBDDHBNG

CD A/C NO. 33004159

### Lien Banker- 2

**SHAHJALAL ISLAMI BANK LTD.**

Narayanganj, Branch,  
56/1 S.M. MALEH ROAD  
Narayanganj -1400, Bangladesh.

A/C NO. 4011-11100008256

SWIFT: SJBLBDDHNGJ

Phone: +8802-7635172



### **Lead Time**

Maximum 45-65 Days after receiving L/C and sample approval.

### **Safe Location of Factory**

We are just 200 meter west side of new Police Line, beside Baitul Abed Zame Mashjeed at our own premises adjacent to the main road of Dhaka- Narayanganj. Being 15 kilo meters far from the Capital city – Dhaka, we are free from all type of political and environmental pollution but enjoying all facilities of Capital city.

### **Effluent Treatment Project (ETP)**

A complete ETP project is working all over the working hour with a capacity of 50 m<sup>3</sup> / hr and taking complete care to recycle the each drop of waste water from Dyeing factories to keep the environment free from any type of water pollution.

<b>Name of Machinery</b>	<b>Origin</b>	<b>Qty.</b>	<b>Capacity/ MC</b>
WATER TREATMENT PLANT	India	01	60M <sup>3</sup> /HR
EFFLUENT TREATMENT PLANT (ETP)		01	50M <sup>3</sup> /HR

### **Our Values:**

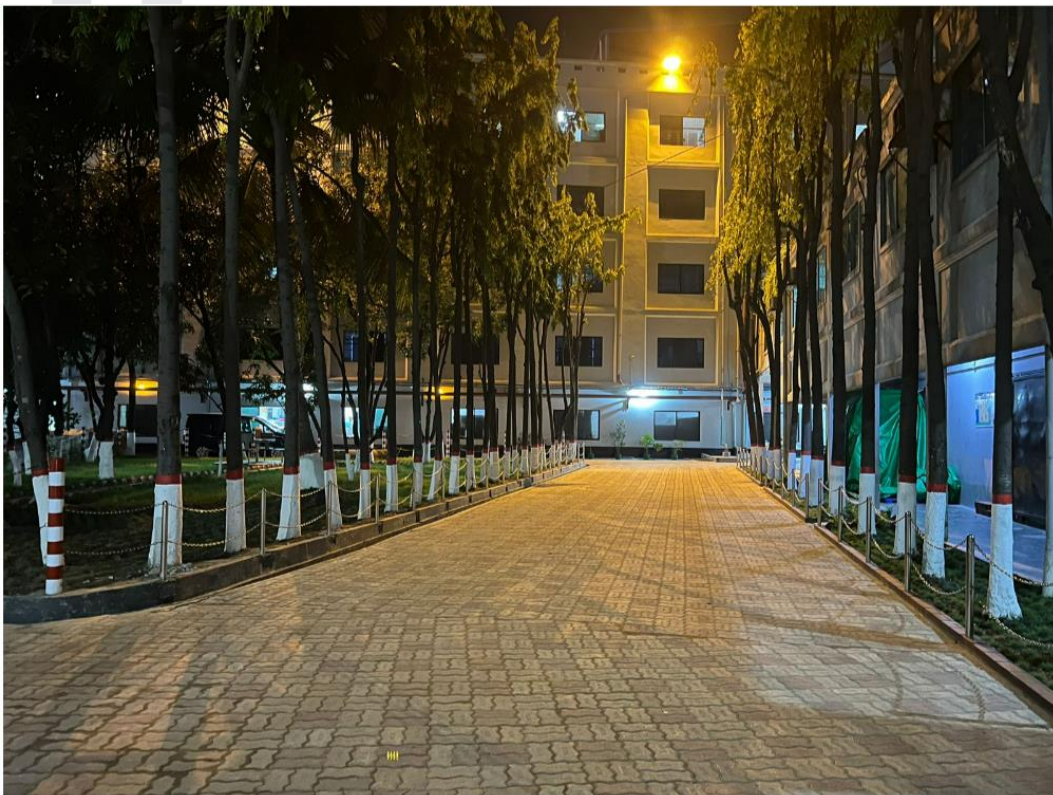
- Quality Business with Honesty & Sincerity.
- We maintain the highest achievable quality of products
- Shortest lead time maintaining on time delivery.
- Competitive Pricing.
- Focusing on environmental sustainability.
- Conducted by skilled & amiable People.
- We strive for zero tolerance in Compliance.

### Import & Export Figure of the Company

YEAR	EXPORT (USD)
2017	\$8.39 Million
2018	\$11.70 Million
2019	\$11.60 Million
2021	\$9.65 Million
2022	\$20.29 Million



Annual Export value Graph preview



**Picture-1: Front View Of Rahman Knit Garments Ltd.**



**Picture-2: Front View of the Fabric Dyeing Dept.**



**Picture-3: Inside View of the Fabric Dyeing unit.**



**Picture-4: Inside View of the Open finish (Stenter) floor**



**Picture-5: View of Mahbubur Rahman Memorial Hospital (MRMH)**



**Picture-6: View of Mahbubur Rahman Memorial Hospital (Diabetic & Cardiac Unit)**

## COMPANY GROUP INFORMATION AT A GLANCE



### Established in 2012

- Producing Steel And Deformed Bar
- Industry Leading 60G/ 420W Quality
- A trusted brand for Corporate sales
- 120 Tons Capacity Per Day
- 100+ Employment



Scan to visit website



### Established in 1991

- A vertical Setup
- Composite Factory
- 6 Tons Knitting Capacity Per Day
- 11 Tons Dyeing Capacity Per Day
- 50,000+ Sewing Capacity Per Day
- 4 Tons Yarn Dyeing Capacity Per Day
- 1200+ Employment



Scan to visit website



### Established in 2017

- State Of The Art Machinery
- Best Quality Raw Cotton Selection
- 52000 Spindles
- Export Unit: 20 Tons per Day
- Local Unit: 10 Tons per Day
- 1000+ Employment



Scan to visit website



CSR concern of the group

Mahbubur Rahman Memorial Hospital and Nursing Institute



### Established in 2016

- Non-Profitable Organisation
- Minimum Cost Healthcare
- 25 Doctors & 50 Nurses At Service
- Nursing Institute
- Women Empowerment In Village



Scan to visit website

## GROUP TIME LINE AT A GLANCE

### The Story Behind This Group of Companies

